



**Longfellow Road, Coventry, CV2 5DE**

**Loveitts**

PART OF | SHELDON BOSLEY KNIGHT



# Property Description

Sheldon Bosley Knight are proud to welcome to the market this ground floor apartment that is perfect for either first-time buyers or investors. The property is situated in the very sought-after residential area of Poets Corner, which is close to several major supermarkets, local shops, bus routes and offers fantastic transport links to the A444/M6.

The property is located on the ground floor and consists of an entrance hall, a generously sized lounge, a fitted kitchen, two bedrooms and a family sized bathroom. The front of the property consists of an allocated parking space and a security door leading to the communal area.

Offered with no upward chain so call us now to arrange a viewing.







## Key Features

- GROUND FLOOR APARTMENT
- TWO DOUBLE BEDROOMS
- OVER 100 YEAR LEASE
- ALLOCATED PARKING SPACE
- GREAT FOR FIRST TIME BUYERS
- GREAT PUBLIC TRANSPORT LINKS
- CLOSE TO LOCAL SHOPS AND MAJOR SUPERMARKETS
- GAS CENTRAL HEATING
- NO ONWARD CHAIN
- EPC - B

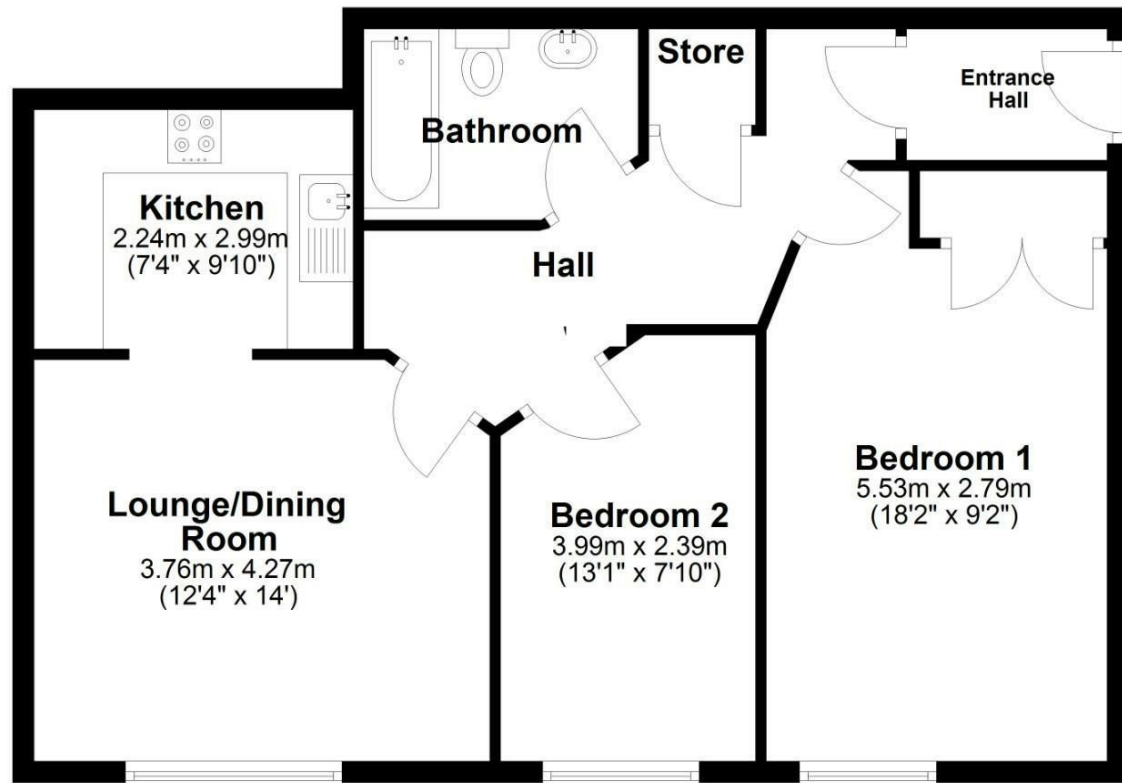
**Offers Over  
£139,000**





## Ground Floor

Approx. 66.5 sq. metres (715.8 sq. feet)



Total area: approx. 66.5 sq. metres (715.8 sq. feet)



EPC Rating - B

Tenure - Leasehold

Council Tax Band - B

Local Authority  
Coventry City Council

We routinely refer clients to both our recommended Legal Firm and a panel of Financial Services Providers. It is your decision whether you choose to deal with these companies. In making that decision, you should know that we receive a referral fee





To view this property please contact our Loveitts Coventry (Sales) office  
on 02476 258421